

CRUXCAN(CRX-1000)

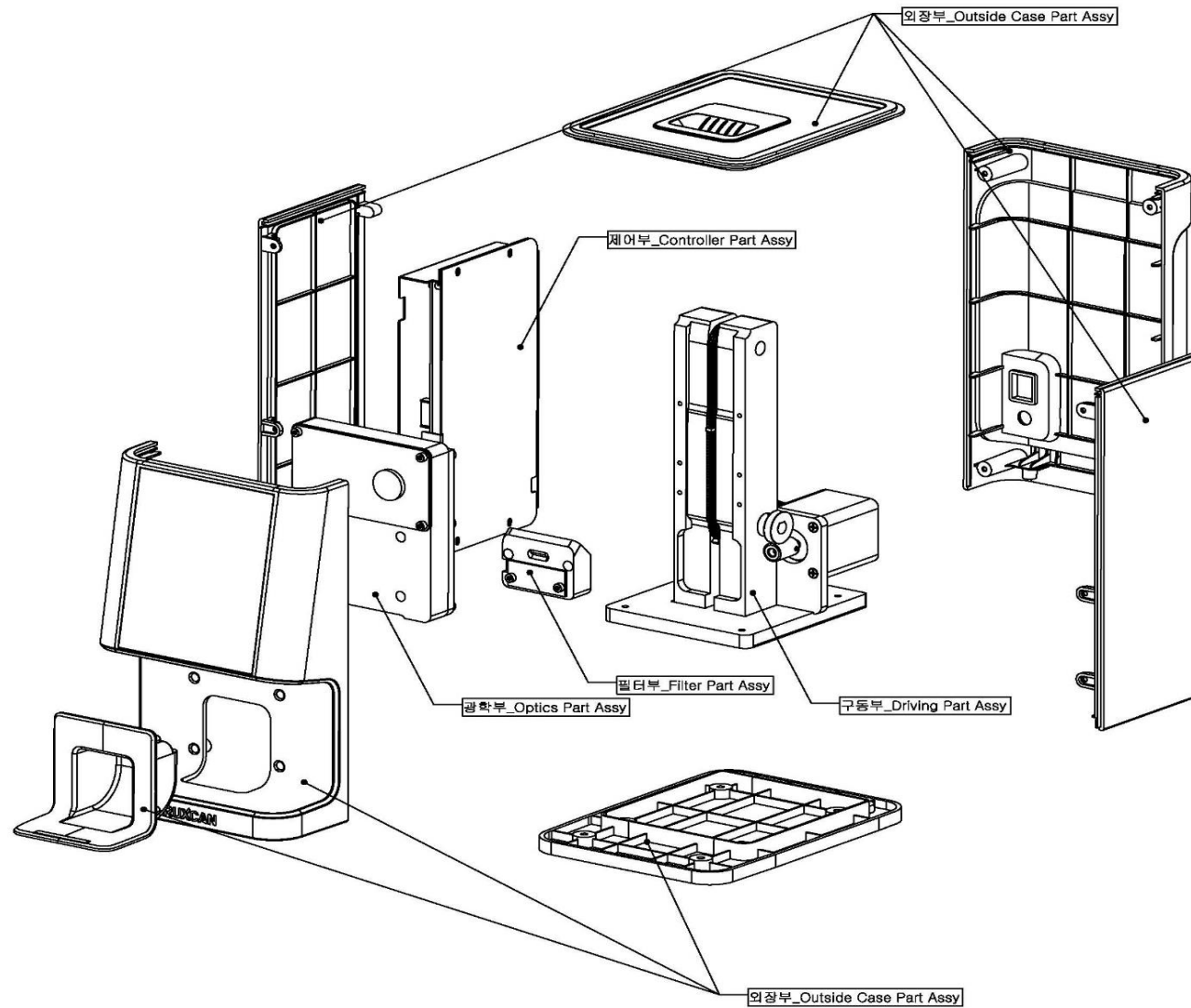
Disassembly Guide

Disassembly Guide

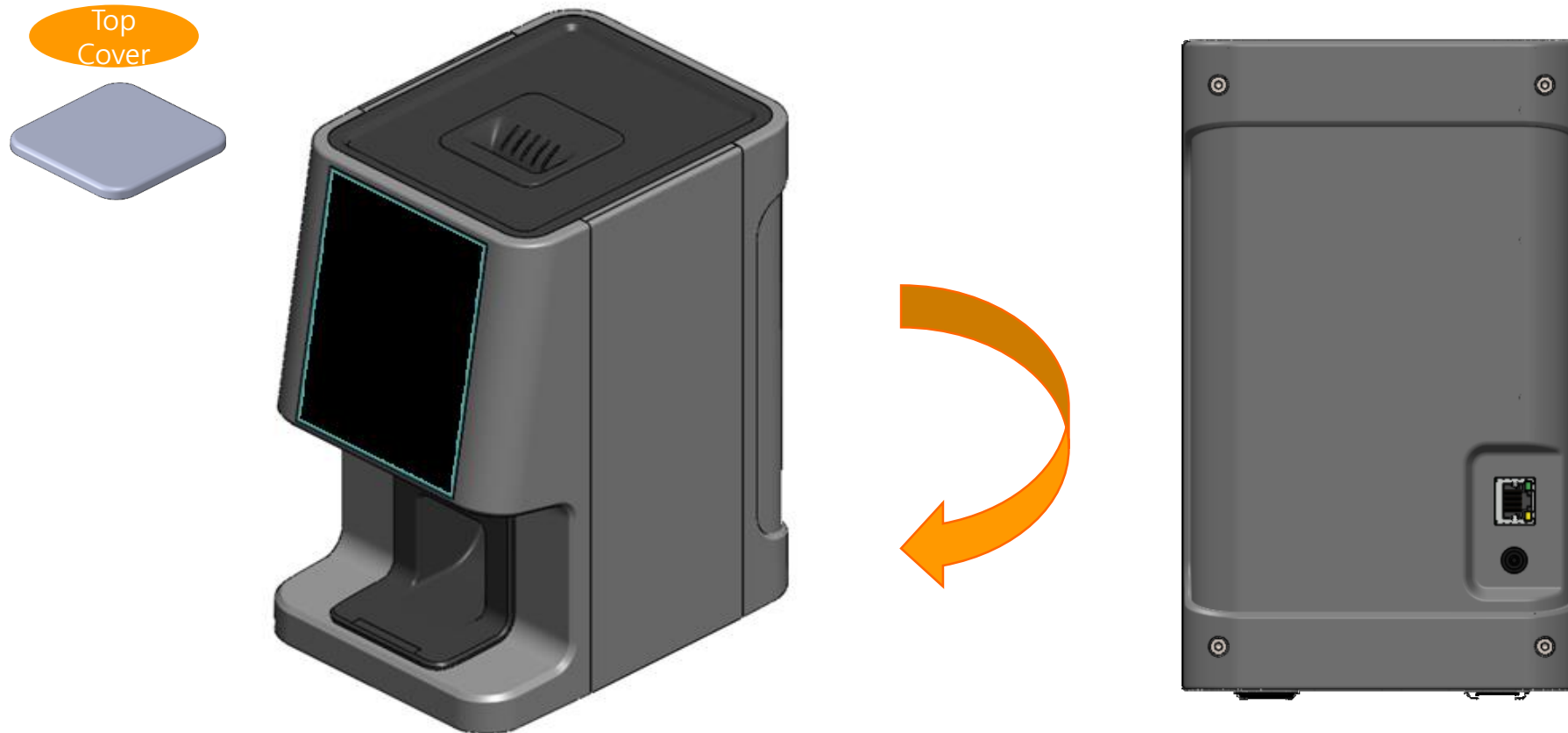
CONTENTS

- 1 . Deal Drawing.
- 2 . Outside Part Assy.
- 3 . Optics Part Assy.
- 4 . Filter Part Assy.
- 5 . Controller Part Assy.
- 6 . Driving Part Assy.

1. Deal Drawing.

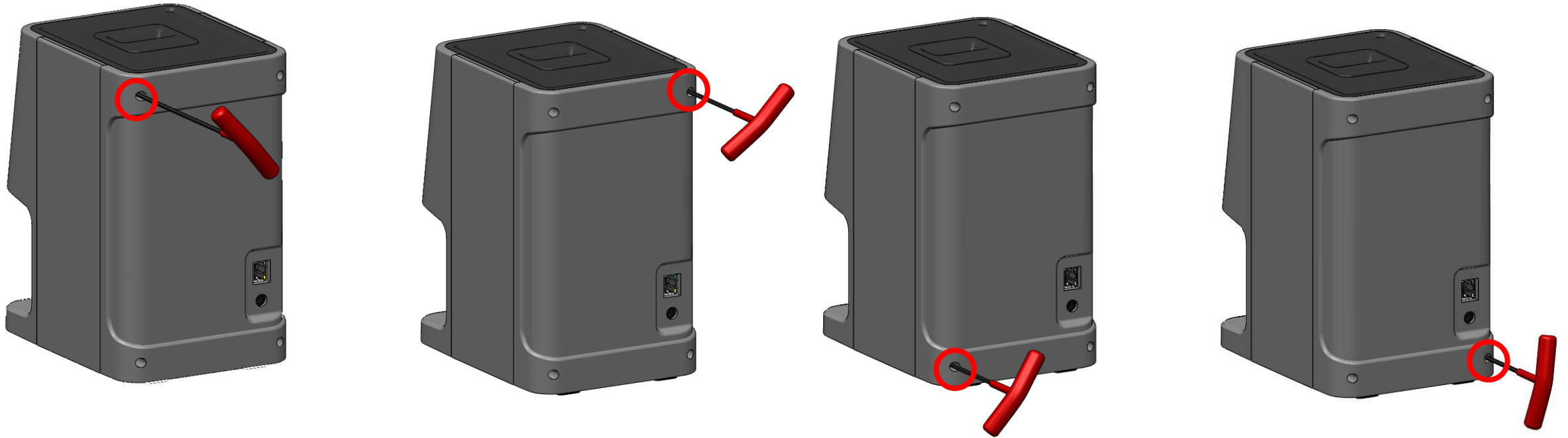


2. Outside Part Assy.



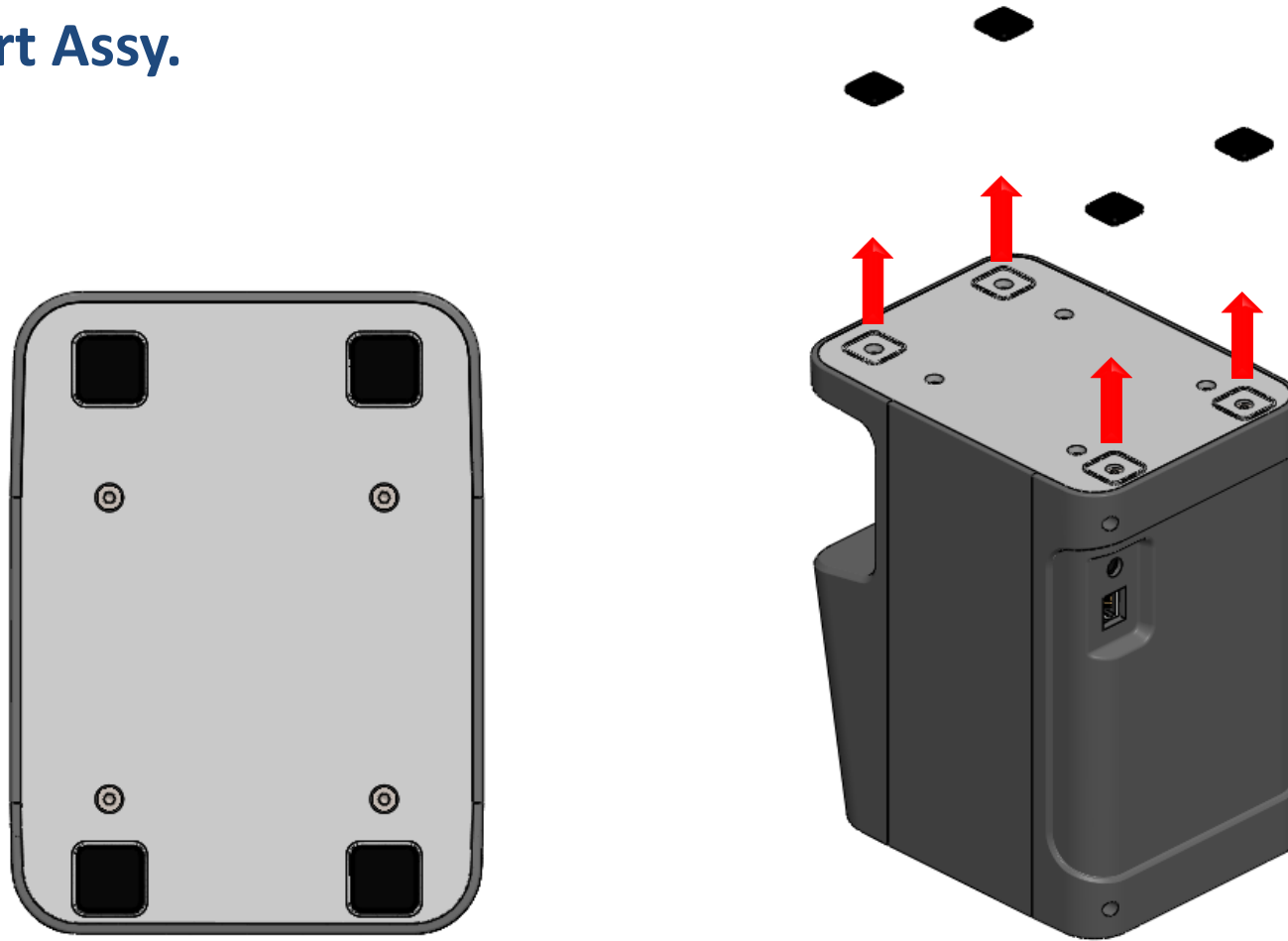
Remove Top Cover and see the back Panel.

2. Outside Part Assy.



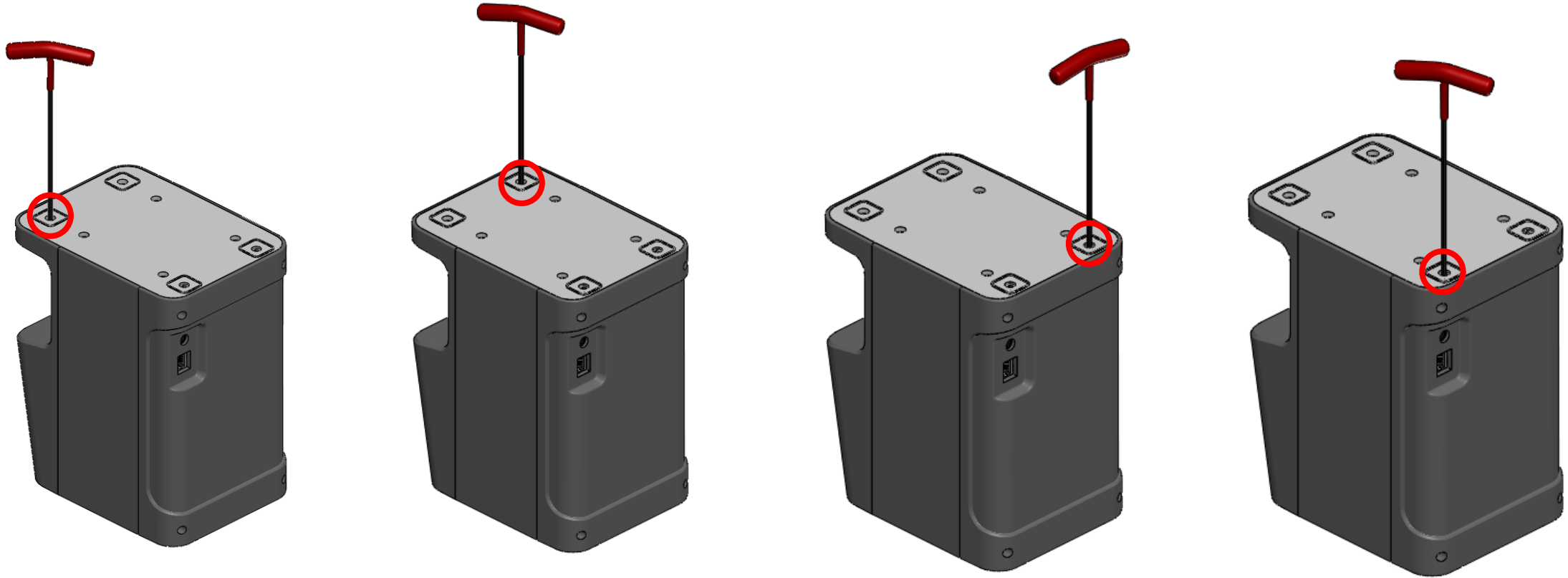
Loosen screws of 4 points on back panel.
Use 2.5Ø hexagon wrench for loosen.

2. Outside Part Assy.



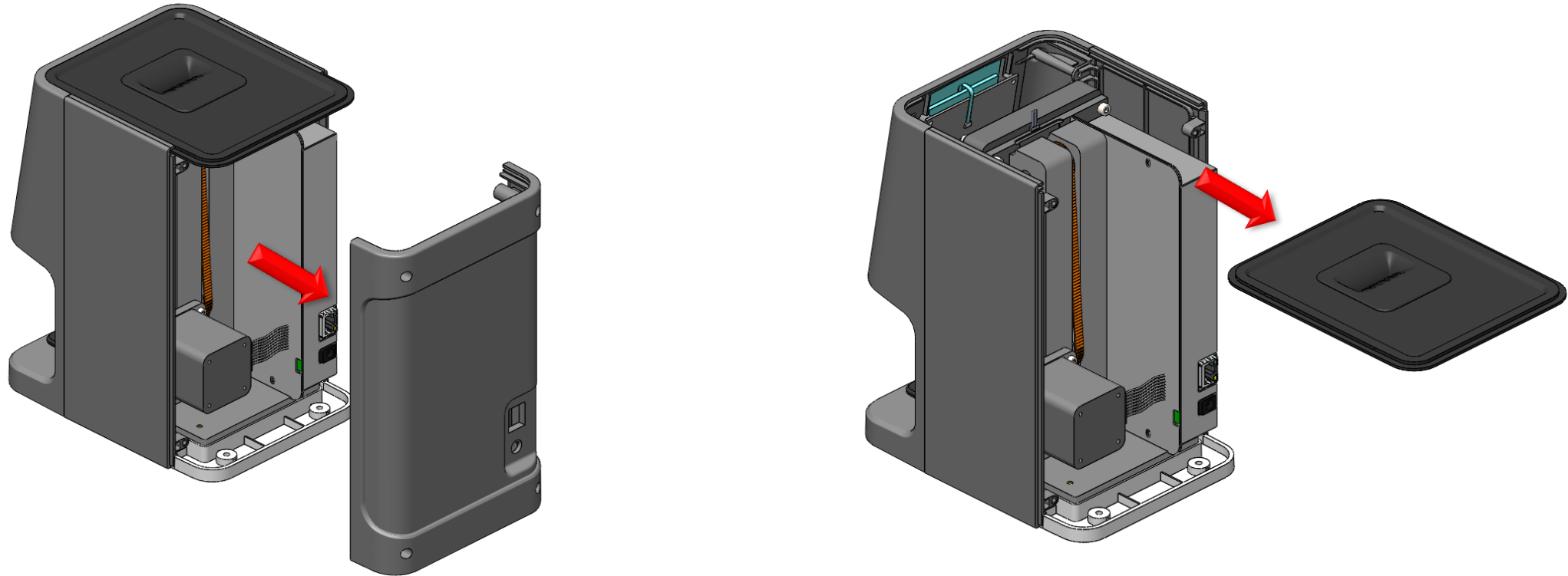
Turn over the device and see the bottom.
Remove rubber feet from bottom.

2. Outside Part Assy.



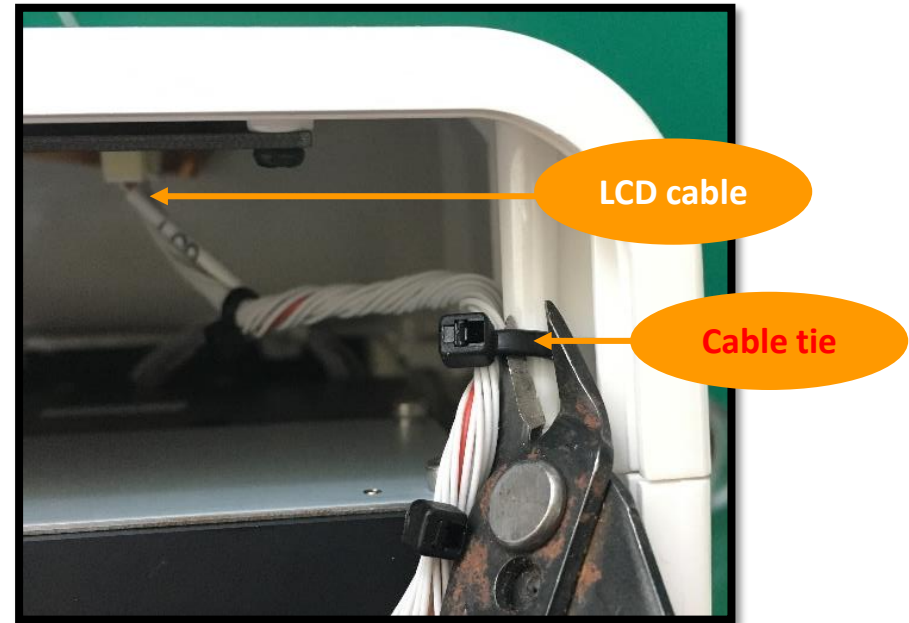
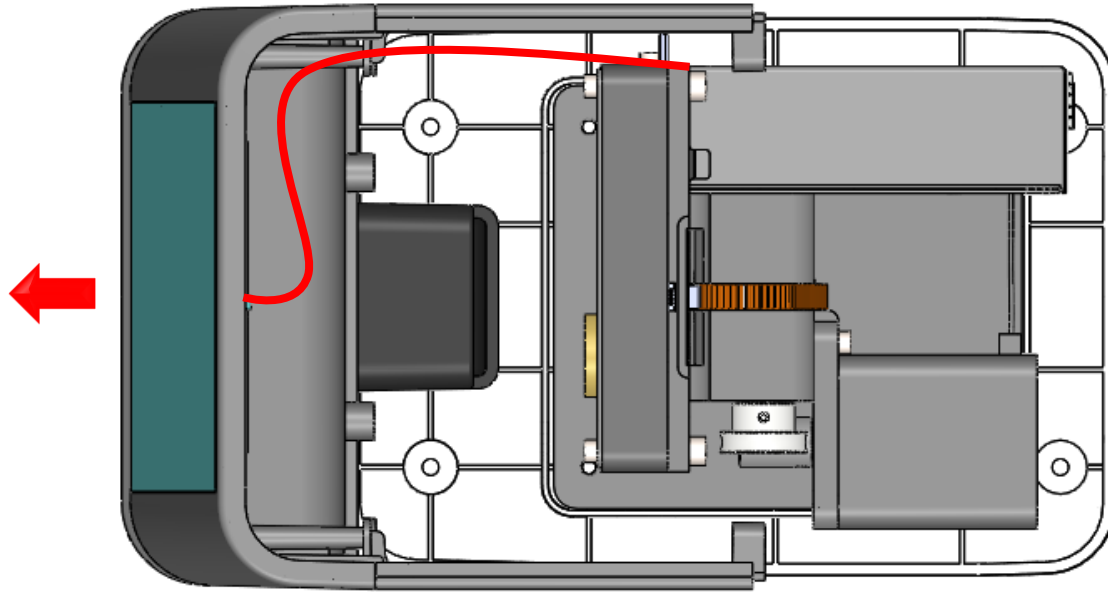
Loosen screws of 4 points on bottom located rubber feet.
Use 3Ø hexagon wrench for loosen.

2. Outside Part Assy.



Pull back panel and top panel from device carefully.

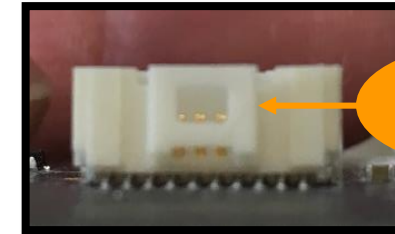
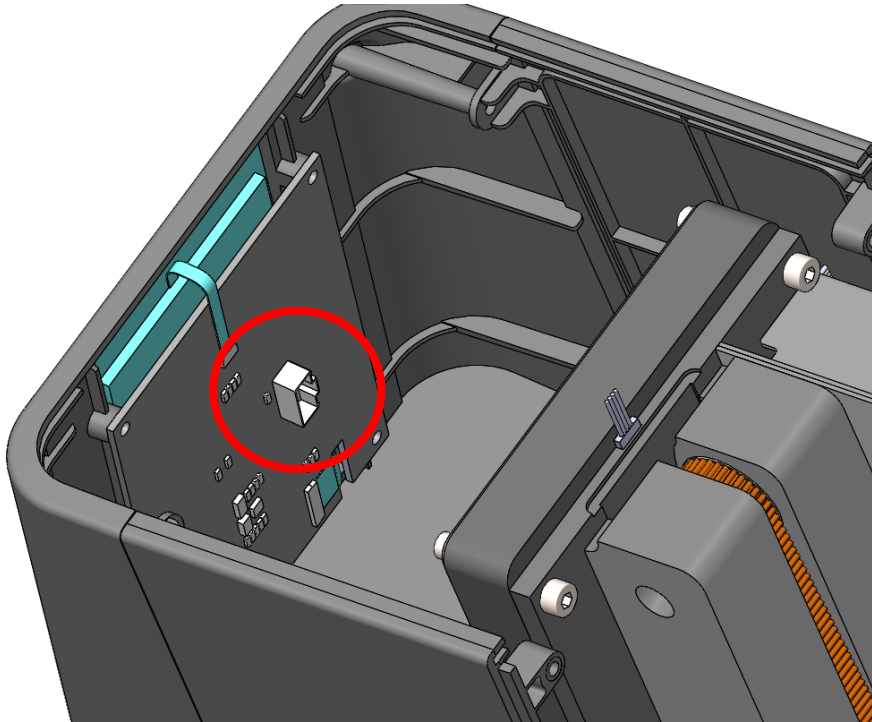
2. Outside Part Assy.



Pull front panel little bit and have cut cable tie if LCD cable is tied with cable tie on the wall.

※ Be careful not to have cut LCD cable.

2. Outside Part Assy.



LCD cable
lock point

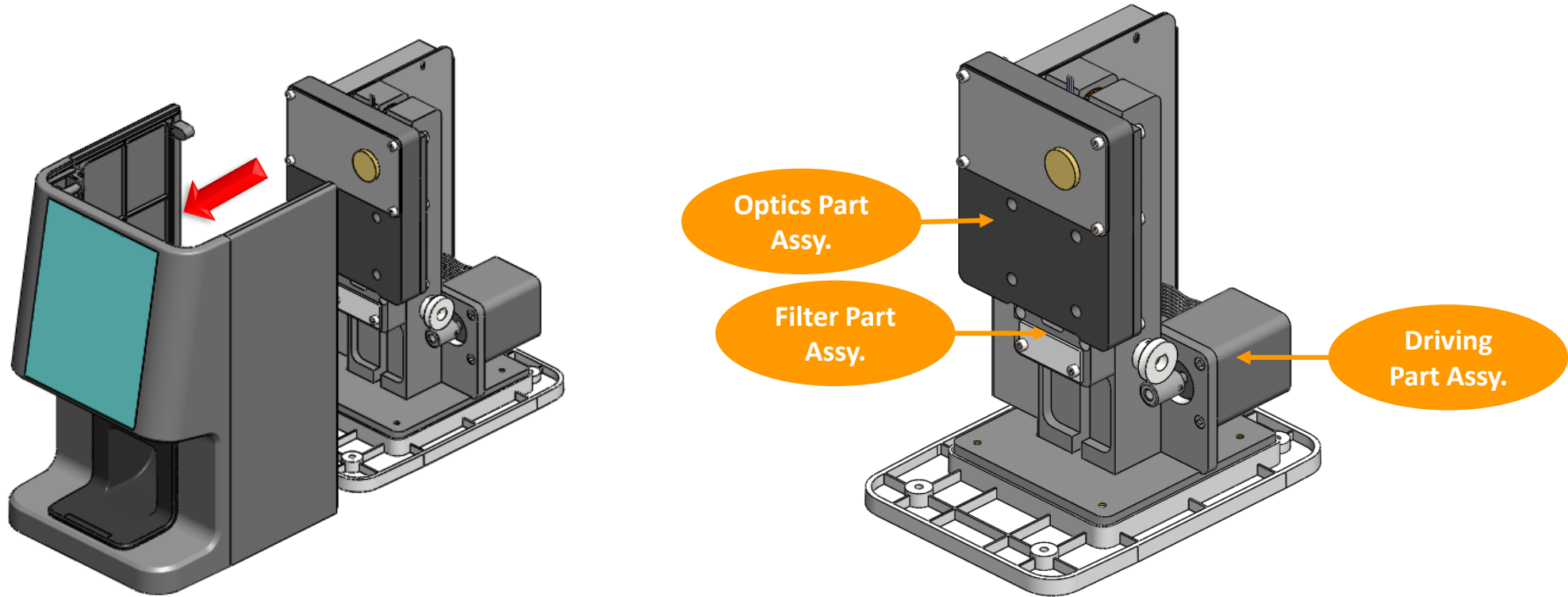


1. Hold here during
disconnecting
2. Pull the cable

Disconnect LCD cable from front panel.

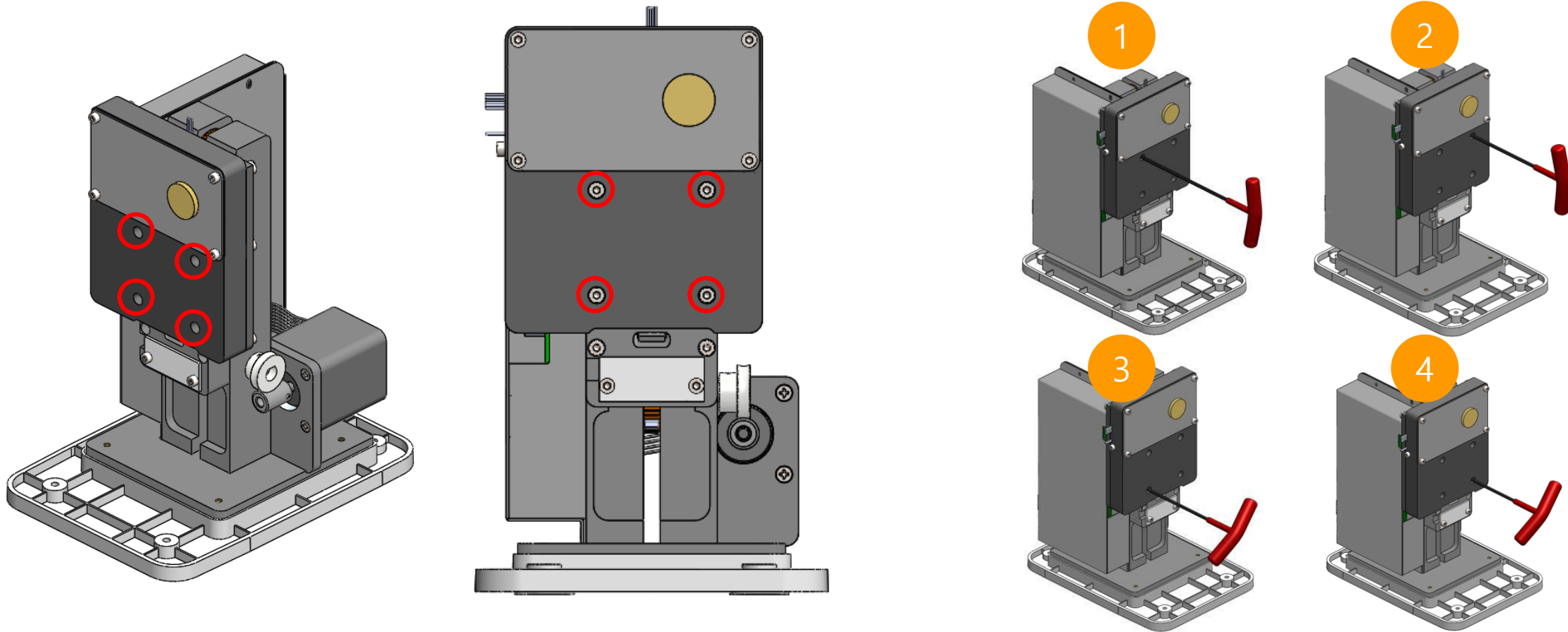
LCD cable has lock for connection, So you should unlock LCD cable before disconnect.

2. Outside Part Assy.



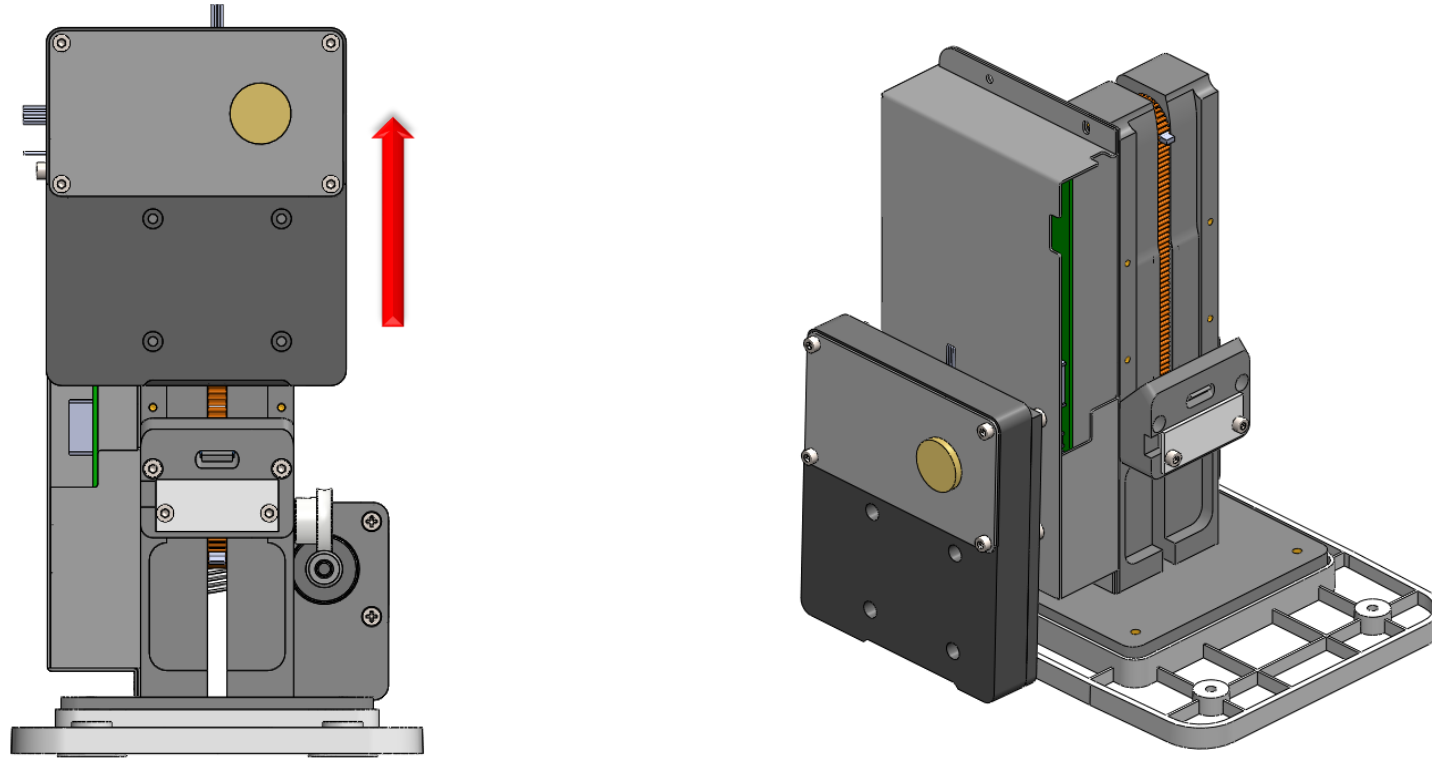
Pull front panel from device to remove outside case.
Then, you can see the inner design of device.

3. Optic Part Assy.



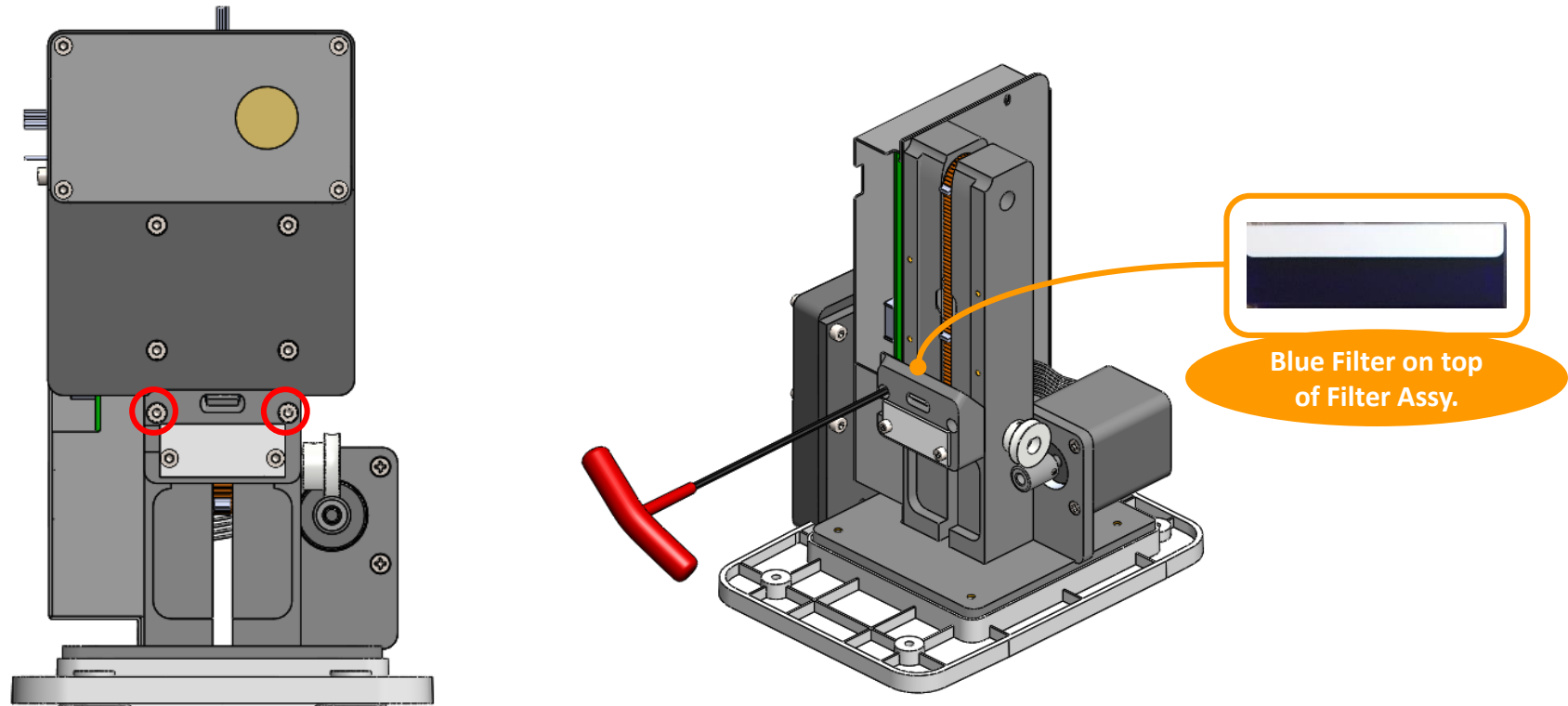
Loosen screws of 4 points on Optics Assy.
Use 2.5Ø hexagon wrench for loosen.

3. Optic Part Assy.



Lift up Optics Assy from device carefully not to damage cables connected with Optic Assy.

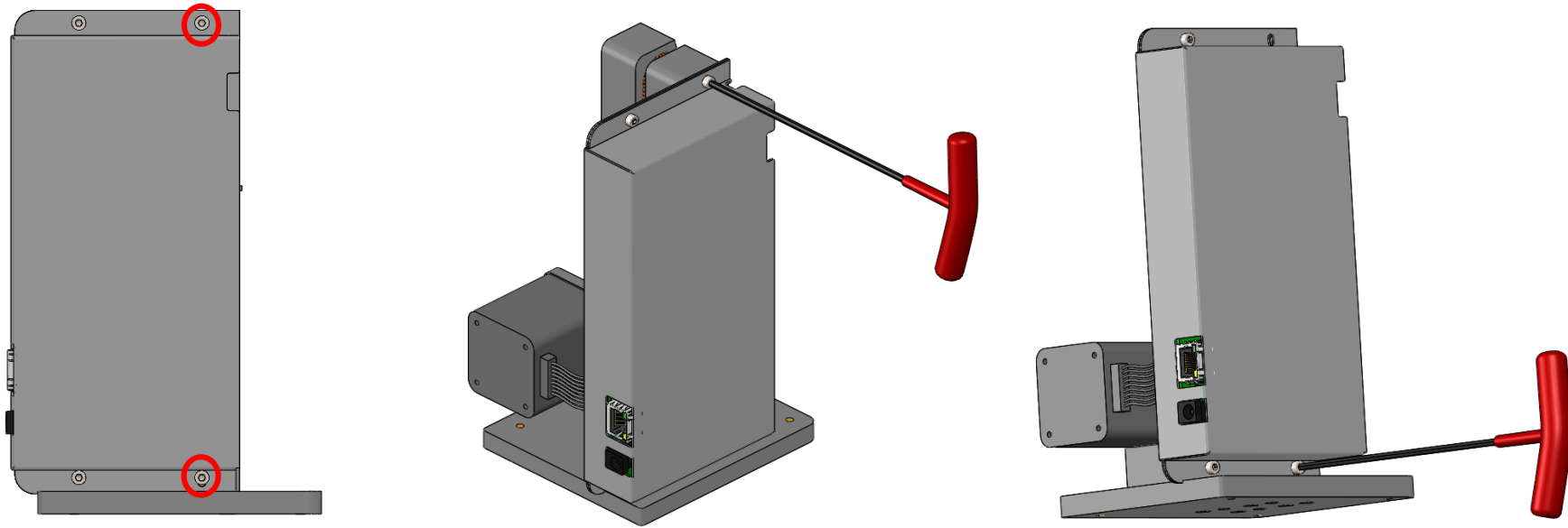
4. Filter Part Assy.



To detach Filter Assy, Loosen screws of 2 points on Filter Assy and detach Filter Assy from device carefully not to damage cable connected with Filter Assy.

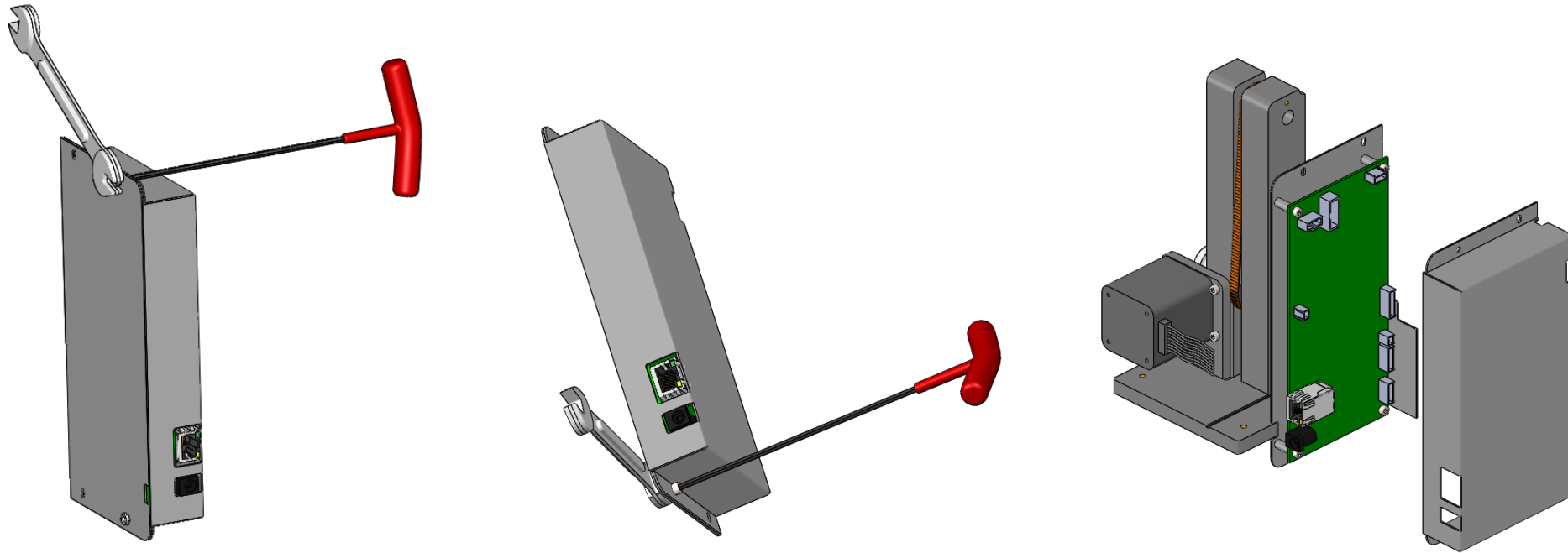
※ Don't touch blue filter with bare hand and Be careful of Blue Filter when you detach Filter Assy because it's not fixed on Filter Assy.

5. Controller Part Assy.



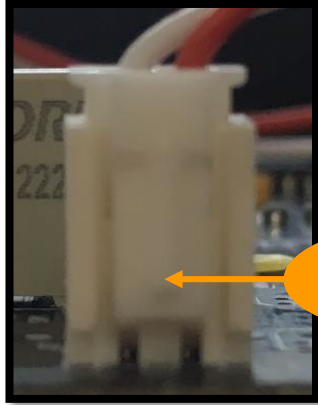
Loosen screws of 2 points to detach Controller Assy from device.
Use 2.5Ø hexagon wrench for loosen.

5. Controller Part Assy.

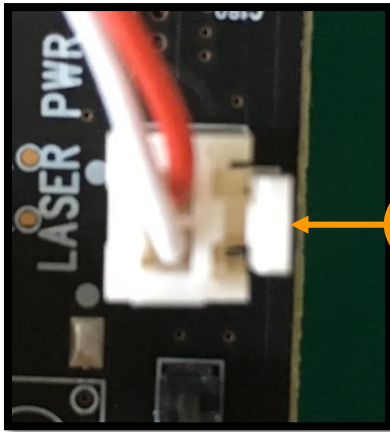


Loosen screws of 2 points to remove EMI shield from Controller Assy.
Use 2.5Ø hexagon wrench and 5.5Ø spanner wrench for loosen.

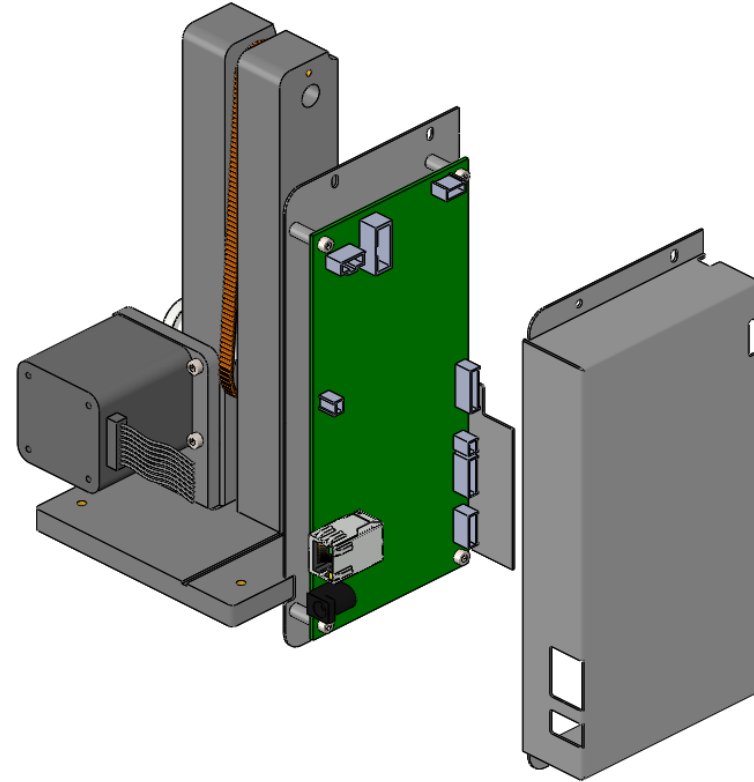
5. Controller Part Assy.



Cable
lock point

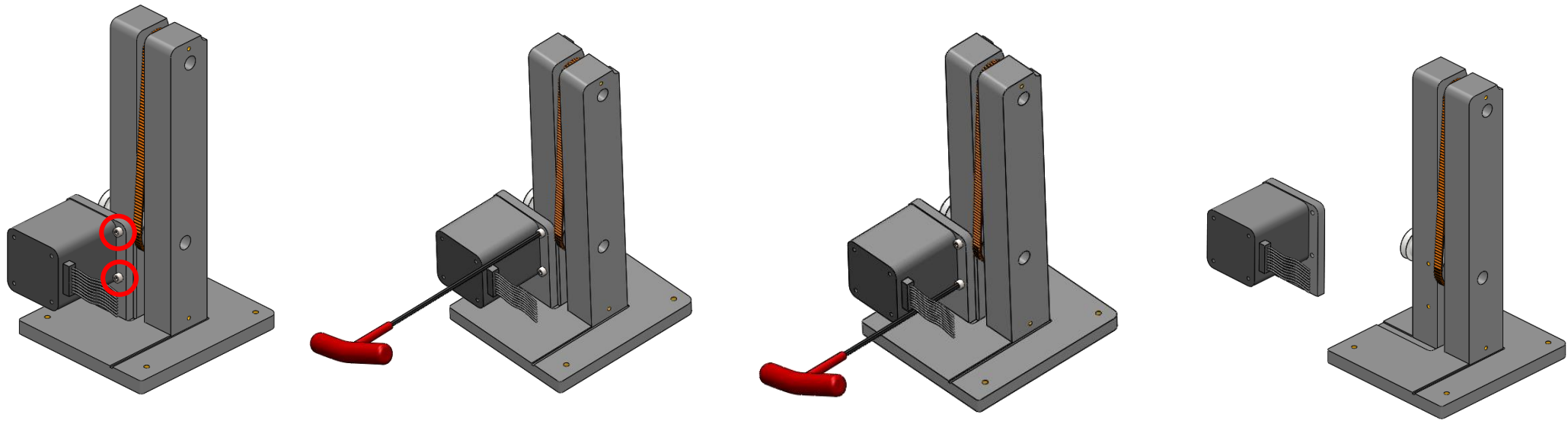


1. Hold here during
disconnecting
2. Pull the cable



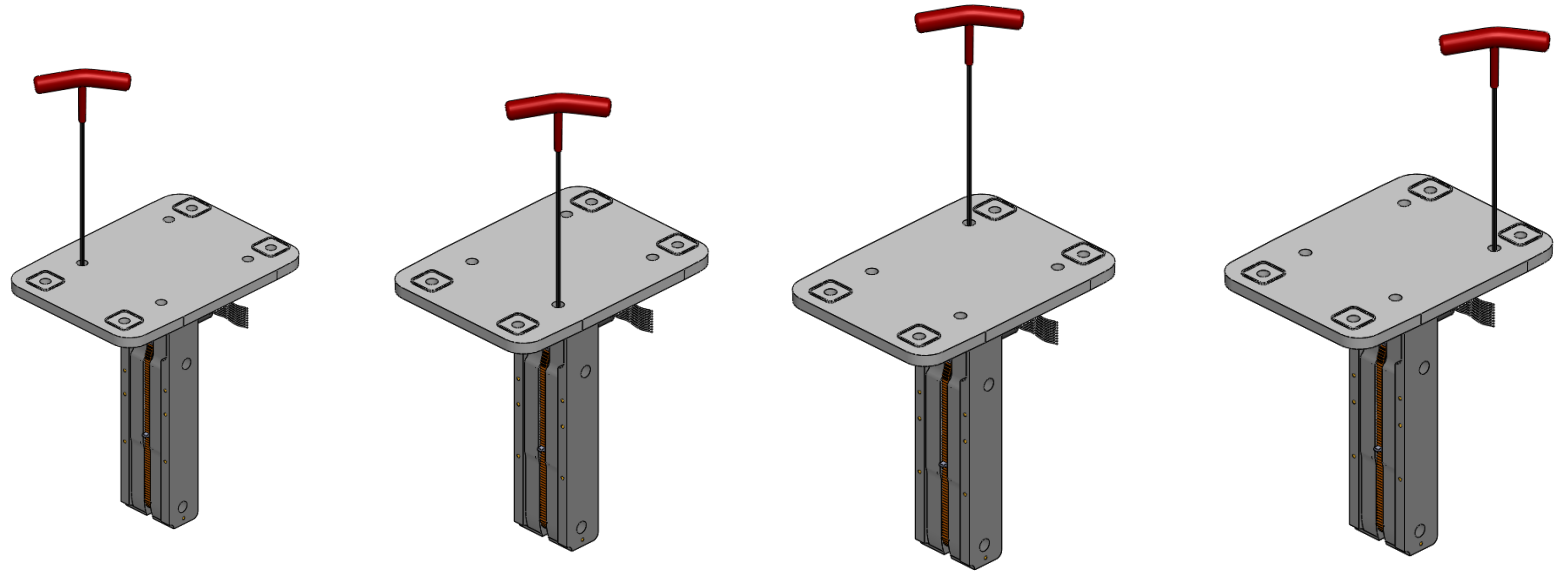
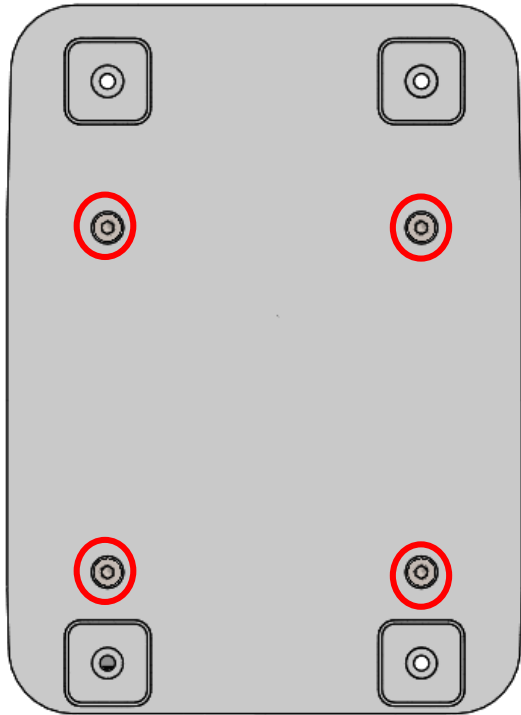
When you see main board, there are lots of connectors on board connected with other Assys(Optics, Filter, Driving) like above images. This connector has lock for connection, so you should unlock when you disconnected cable.

6. Driving Part Assy.



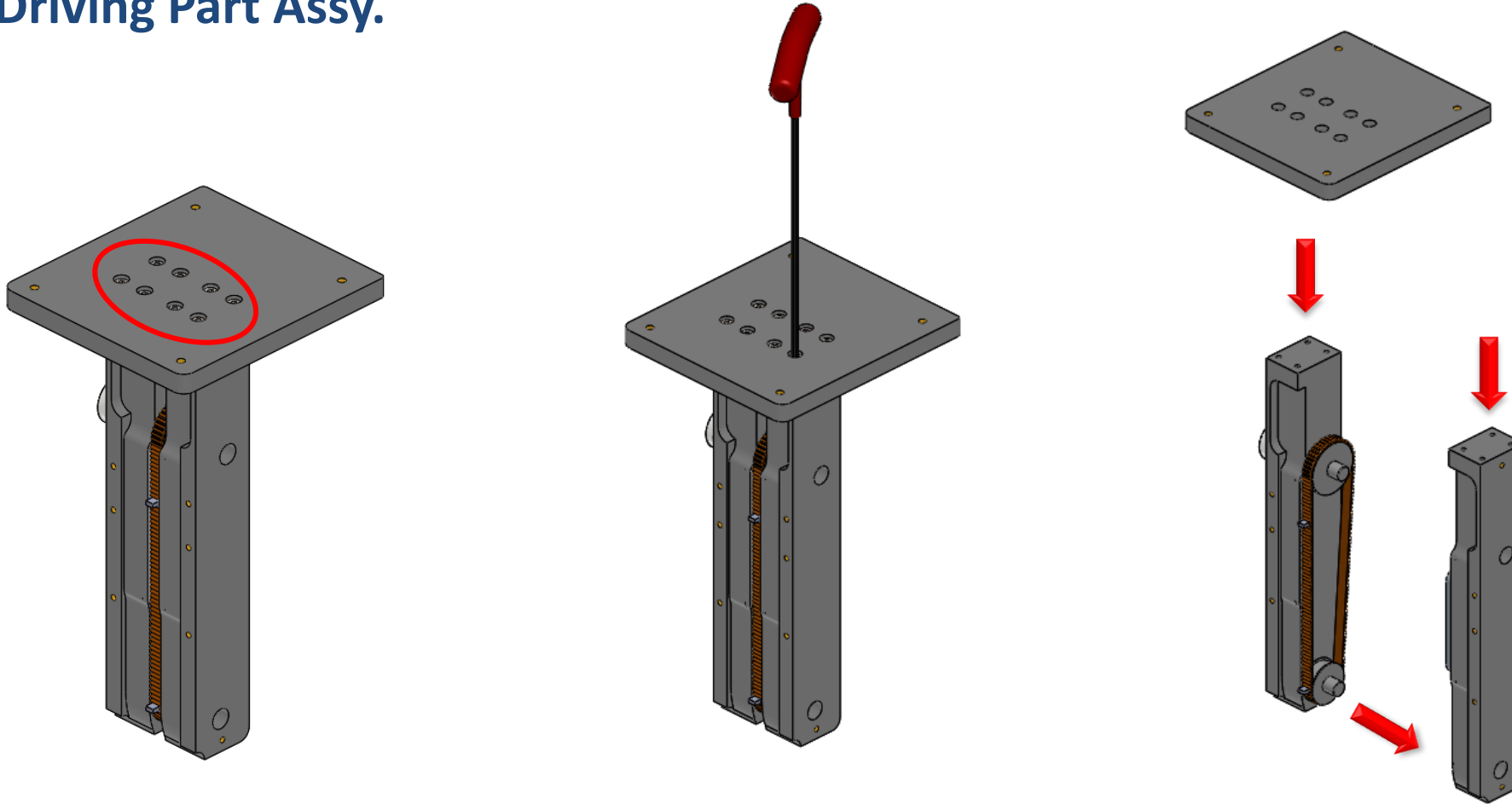
Loosen screws of 2 points to detach Stepping motor from device.
Use 2.5Ø hexagon wrench for loosen.

6. Driving Part Assy.



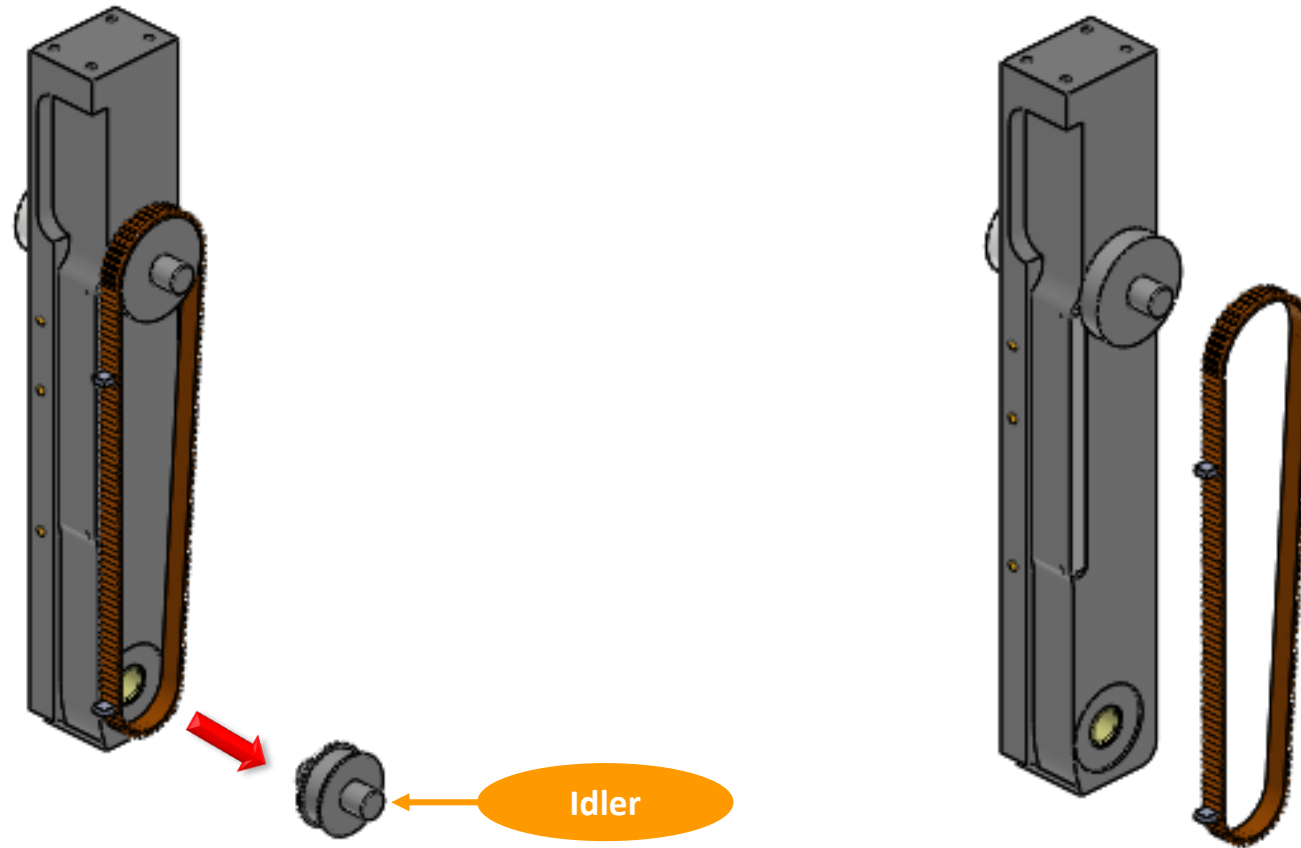
Turn over device and loosen screw 4 points on bottoms to detach bottom case.
Use 3Ø hexagon wrench for loosen.

6. Driving Part Assy.



Loosen screws of 8 points to detach mount panel.
Use 2.5Ø hexagon wrench for loosen and detach 2 pillars from mount panel.
Detach one pillar from other pillar.

6. Driving Part Assy.



Detach Idler from pillar and belt.